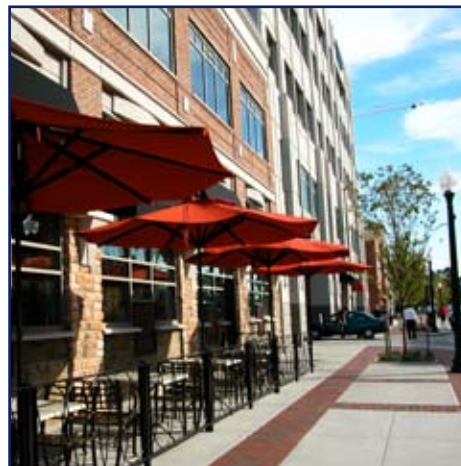




The world's largest resort city in terms of land, Virginia Beach offers oceanfront, bay front, riverside and lakeside living, as well as quiet neighborhoods with plenty of trees, and rural ones with lots of open spaces. Located on the shores of the Chesapeake Bay and the Atlantic Ocean, Virginia Beach is the largest city in the Commonwealth of Virginia. Virginia Beach is best known as a major resort, with miles of beaches and hundreds of hotels, motels, and restaurants along its oceanfront. It is also home to several state parks, several long protected beach areas, a number of large corporations, and two universities. The growing public school system consistently receives accolades, the two annual art shows on the boardwalk are nationally known and between the boutiques, malls and "super stores," the shopping is terrific. The Virginia Beach Amphitheater provides the entire area with plenty of national musical entertainment. First Landing State Park, The Contemporary Arts Center of Virginia and the Virginia Aquarium are just a few of the city's attractions, as well as 28 miles of beaches. Virginia Beach is also home to three military bases including Oceana Naval Air Station, Dam Neck Naval Base, Fort Story Army Amphibious Base as well a National Guard base at Camp Pendleton.

Virginia Beach is in the process of creating a new "downtown" area near the heart of the city. Town Center will feature unique shops and restaurants, as well as The Sandler Performing Arts Center. Town Center also boasts the regions tallest building.

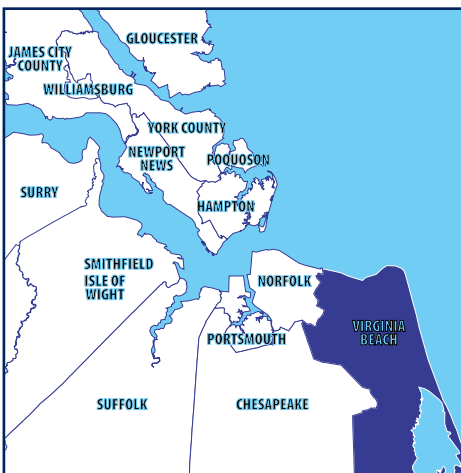
Virginia Beach prides itself on being "A Community For A Lifetime."





# Virginia Beach

VIRGINIA



## Virginia Beach at a glance...

Population:	439,889
Area Size:	258.7 square mile
Median Family Income:	\$61,462
Chamber of Commerce:	(757) 622-2312
Beach Line ( <i>schedule of events</i> ):	(757) 427-3580
Taxes & License: City Treasurer:	(757) 427-4445
Sales tax:	5%
Property tax:	89¢ per \$100 Town Center Central Business District \$1.34 per \$100 Sandbridge 95¢ per \$100
State income tax:	5.75% over \$17,000
Automobile tax:	\$3.70 per \$100
Utilities -	phone numbers for hook ups: (800) 730-0773 One call does it all for: Electric, Cable, Water, Internet, Gas, Telephone, Trash, Newspaper, Satellite, Cellular Phone Service
Education	
School board:	(757) 263-1016
Website:	<a href="http://www.vbschools.com">http://www.vbschools.com</a>
Teacher/pupil ratio:	1 to 25
Number of schools:	high: 16, middle: 15, elementary: 57
Shopping:	Lynnhaven Mall, Town Center Area, Hilltop Area
Public transport:	HRT, Greyhound–Trailways
Travel time:	Norfolk International Airport - 25 minutes
Colleges and Universities:	Regent University Tidewater Community College Norfolk State University & Old Dominion University facility Virginia Beach campus
Hospitals:	Sentara Virginia Beach General Hospital Sentara Leigh Hospital Sentara Bayside Hospital



RELOCATION SERVICES  
 800 Newtown Road, Virginia Beach, VA, 23462  
 800-446-8260 • 757-490-0022  
[www.williamewood.com](http://www.williamewood.com)

